

25/01/21

Write each decimal as a fraction.

$$0.7 = \frac{7}{10}$$

$$0.73 = \frac{73}{100}$$

$$0.42 = \frac{42}{100}$$

$$0.88 = \frac{88}{100}$$

Use the short division method to convert the fractions to decimals.
Write the decimals to three decimal places.

$$\begin{array}{r} 0.625 \\ 8 \overline{) 5.000} \\ \underline{40} \\ 20 \\ \underline{16} \\ 40 \\ \underline{40} \\ 0 \end{array}$$

$$\begin{array}{|c|} \hline 5 \\ \hline 8 \\ \hline \end{array} \quad \begin{array}{|c|} \hline 4 \\ \hline 5 \\ \hline \end{array} \quad \begin{array}{|c|} \hline 8 \\ \hline 5 \\ \hline \end{array}$$

$$\frac{8}{10} = 0.800$$

$$\frac{16}{10} = 1.600$$

$$\begin{array}{r} 1.600 \\ 10 \overline{) 16.00} \\ \underline{10} \\ 60 \\ \underline{60} \\ 0 \end{array}$$

Rosie and Tommy have both attempted to convert $\frac{2}{8}$ into a decimal.



I converted $\frac{2}{8}$ into 0.25

I converted $\frac{2}{8}$ into 4



Who is correct?
Prove it.

- Put the wrong number outside the bus stop.
- Divided by the wrong number.

$$\begin{array}{r} 0.25 \\ 8 \overline{) 2.00} \\ \underline{16} \\ 40 \\ \underline{40} \\ 0 \end{array}$$

8 friends share 7 pizzas.

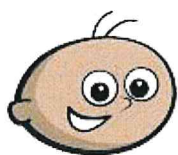
How much pizza does each person get?

Give your answer as a decimal and as a fraction.

$$8 \overline{) 7.000} \quad \frac{875}{1000}$$

Tommy, Alex and Eva are working out the decimal equivalent

of $\frac{60}{200}$



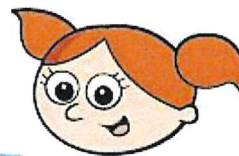
Tommy

You need to convert it to have a denominator of 100 to find the decimal equivalent.

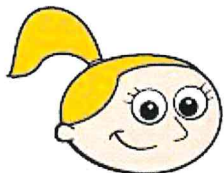
$\div 2$

$$\frac{30}{100} = 0.30$$

I disagree. You need to convert it to have a denominator of 1,000



Alex



Eva

Both of you are right!

$$\frac{300}{1000} = 0.300$$

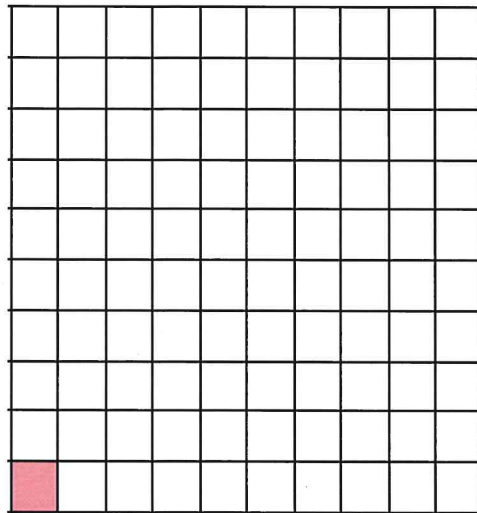
Who do you agree with? Eva

Explain your thinking.

Both answers make 0.3.

Complete the sentences.

a)

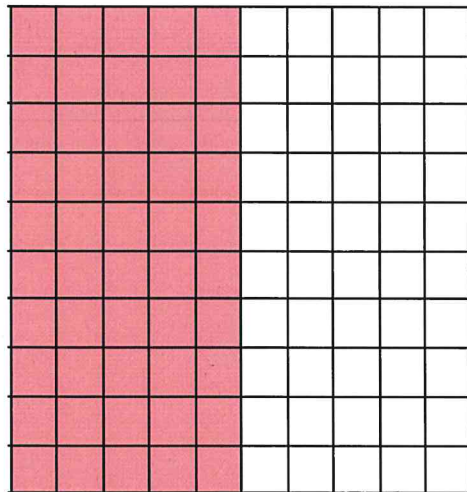


Each square represents $\frac{1}{100}$

$\frac{1}{100}$ of the whole square is shaded.

This is equivalent to 0.01 as a decimal.

b)



$\frac{50}{100}$ of the whole square is shaded.

This can be simplified to $\frac{5}{10}$ or $\frac{1}{2}$.

This is equivalent to 0.5 as a decimal.

T	O	tth	hth	thth
		01 01	0.01 0.01 0.01 0.01	0.001 0.001 0.001

1) What number is represented in the place value chart? Write it in words and numerals. 0.243

two tenths, four hundredths, and three thousandths

2) Write each decimal as a fraction.

$$0.\overline{7} = \frac{7}{10}$$

$$0.73 = \frac{73}{100}$$

$$0.\overline{42} = \frac{42}{100}$$

$$0.88 = \frac{88}{100}$$

3) What is the value of the digit 6? $41.98\overline{6}$

6 thousandths

Write each decimal as a fraction.

$$0.7 = \frac{7}{10}$$

$$0.73 = \frac{73}{100}$$

$$0.42 = \frac{42}{100}$$

$$0.88 = \frac{88}{100}$$

TH	H	T	O	$\frac{1}{10}$	$\frac{1}{100}$	$\frac{1}{1000}$
			0	7		
			0	4	2	

TH	H	T	O	$\frac{1}{10}$	$\frac{1}{100}$	$\frac{1}{1000}$
			0	7	3	
			0	8	8	