

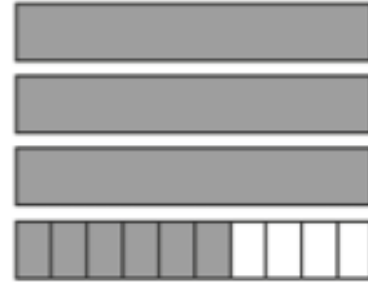
Simplifying Mixed Numbers

1 Simplify.

(a) $2\frac{4}{12} = 2\frac{1}{3}$

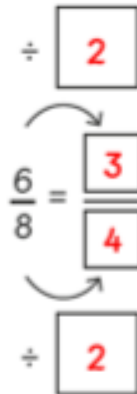


(b) $3\frac{6}{10} = 3\frac{3}{5}$

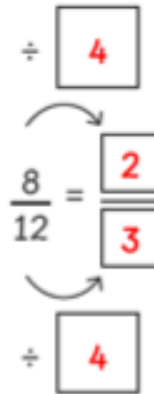


2 Write each mixed number in its simplest form.

(a) $2\frac{6}{8} = 2\frac{3}{4}$



(b) $3\frac{8}{12} = 3\frac{2}{3}$



(c) $4\frac{5}{20} = 4\frac{1}{4}$

$\div 5$

$\frac{5}{20} = \frac{1}{4}$

$\div 5$

(d) $6\frac{6}{9} = 6\frac{2}{3}$

$\div 3$

$\frac{6}{9} = \frac{2}{3}$

$\div 3$

3 Circle the mixed numbers that are in the simplest forms.

$2\frac{3}{5}$

$9\frac{4}{10}$

$1\frac{5}{8}$

$7\frac{4}{6}$

$3\frac{3}{9}$

$6\frac{2}{8}$

$2\frac{5}{12}$

$4\frac{3}{7}$

4 Match each mixed number with its simplest form.

$1\frac{8}{12}$

$2\frac{1}{2}$

$2\frac{2}{4}$

$2\frac{1}{4}$

$1\frac{3}{9}$

$1\frac{2}{3}$

$2\frac{2}{8}$

$2\frac{2}{3}$

$2\frac{4}{6}$

$1\frac{1}{3}$