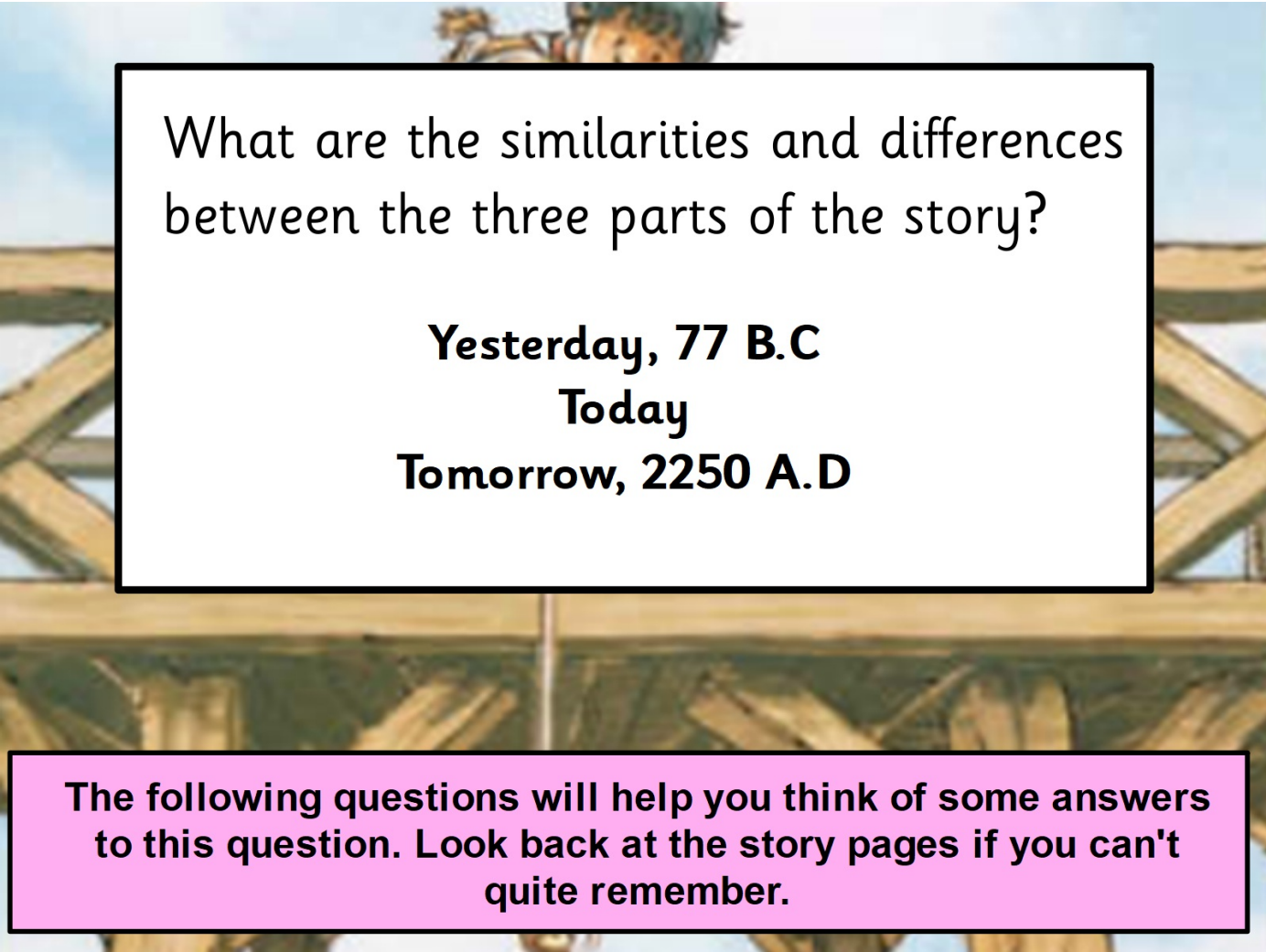


An illustration of three children on a wooden structure, possibly a bridge or a play set. A girl in a yellow dress is sitting on the left, a boy in a blue shirt is in the middle, and a boy in a red shirt is on the right. They are all looking towards the right. The structure is made of wooden beams and has a spider hanging from one of the beams below. The background is a light blue sky.

Day 3

Learning Target

Discuss the actions and relationships of the main characters, justifying views using evidence from the text.



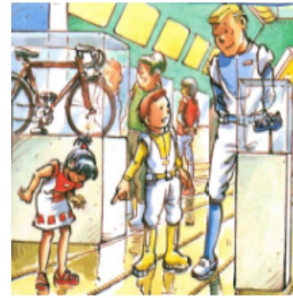
What are the similarities and differences between the three parts of the story?

Yesterday, 77 B.C
Today
Tomorrow, 2250 A.D

The following questions will help you think of some answers to this question. Look back at the story pages if you can't quite remember.

Similarities

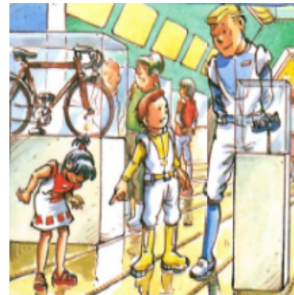
Who is the main character/characters in each of the three parts?



Similarities

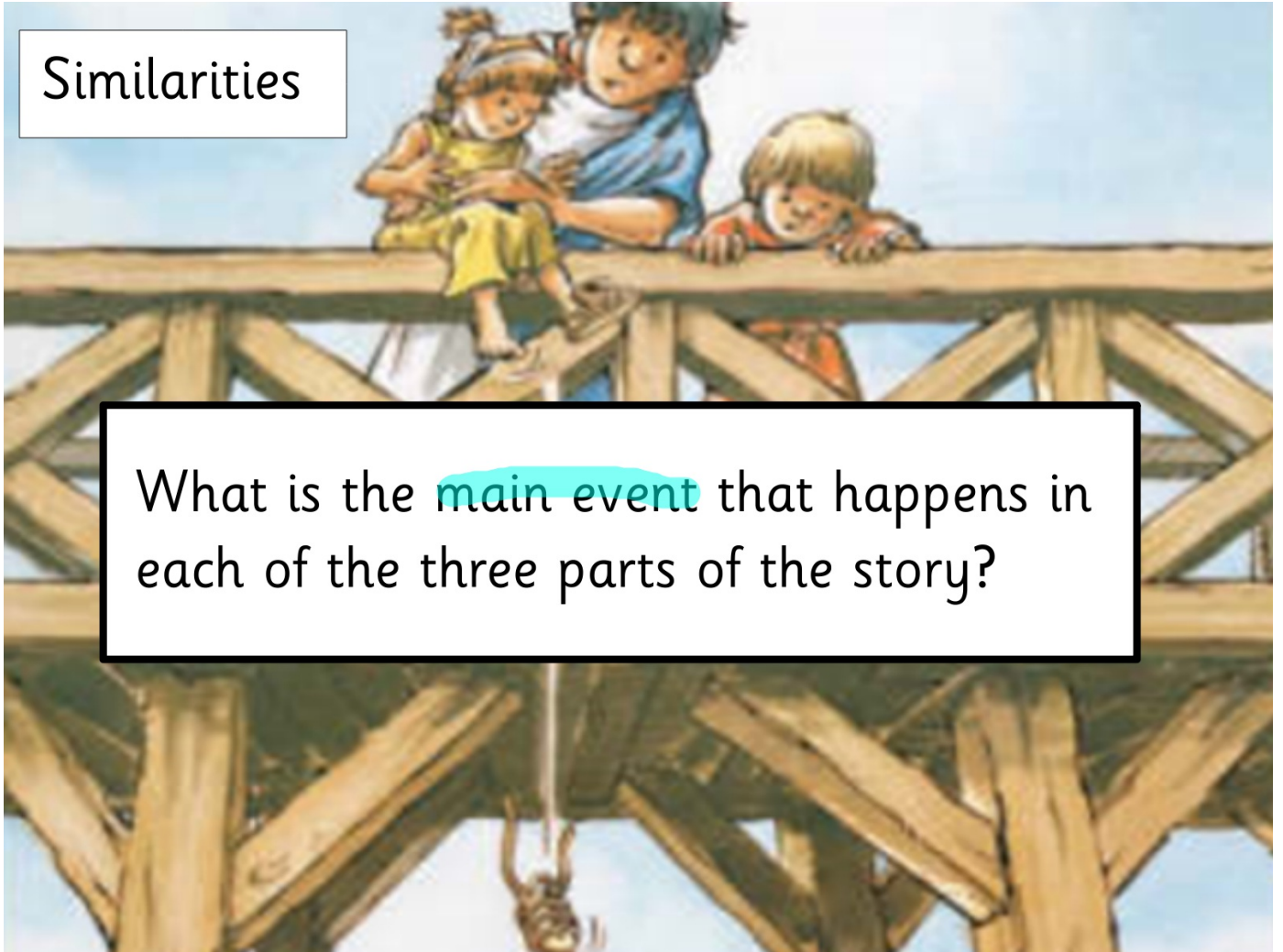
Do the characters have the same relationship in each of the three parts?

What is their relationship?



Similarities

What is the **main event** that happens in each of the three parts of the story?



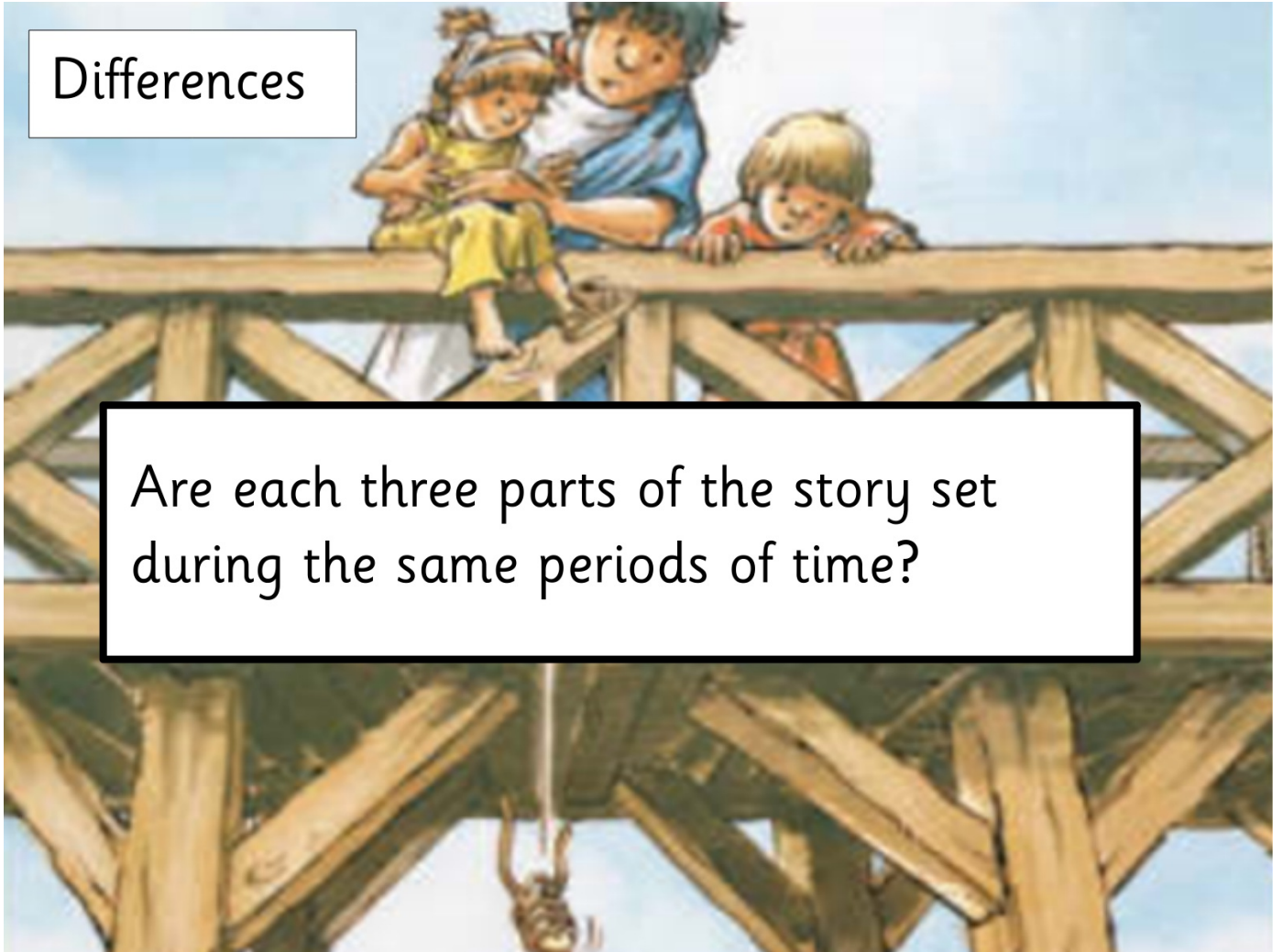
Differences

Does each of the families visit the same place in all three parts of the story?



Differences

Are each three parts of the story set during the same periods of time?



Differences

How would you describe each of the three different time periods?

