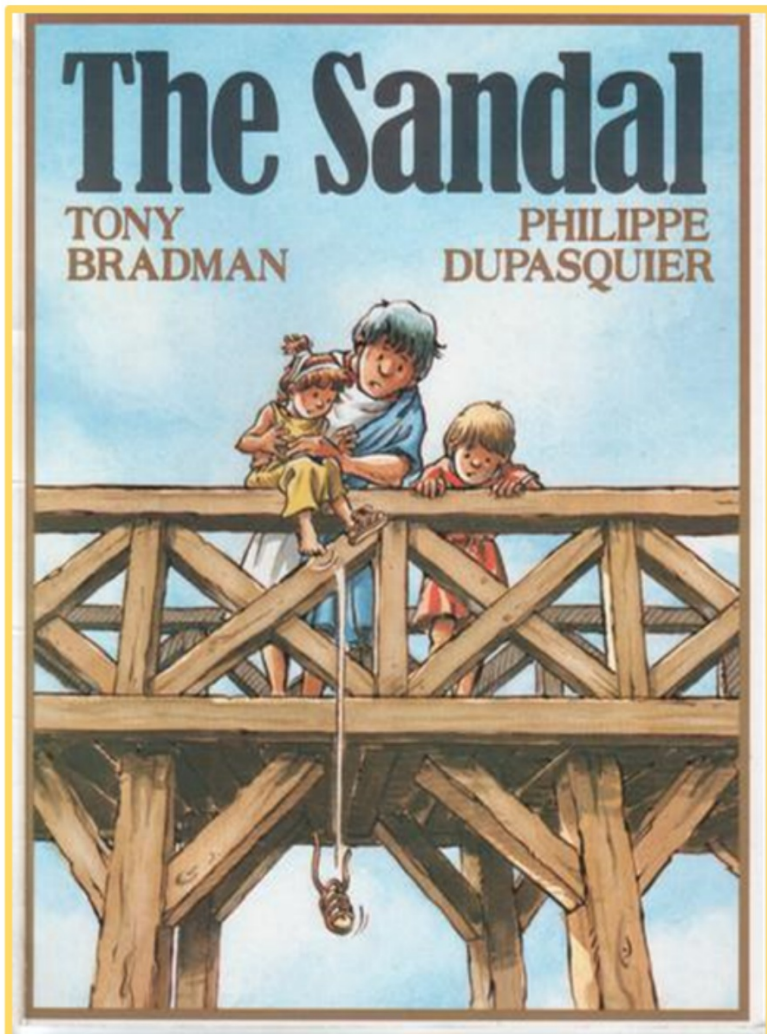
An illustration of a man with dark hair and a blue shirt sitting on a wooden bridge. He is holding a young girl in a yellow dress on his lap. To his right, a young boy with blonde hair is leaning over the edge of the bridge. The bridge has a wooden railing and a lattice-like structure underneath. The background is a clear blue sky.

Day 1

The Sandal

Learning target

Identify settings and predict events that are likely to happen in them.

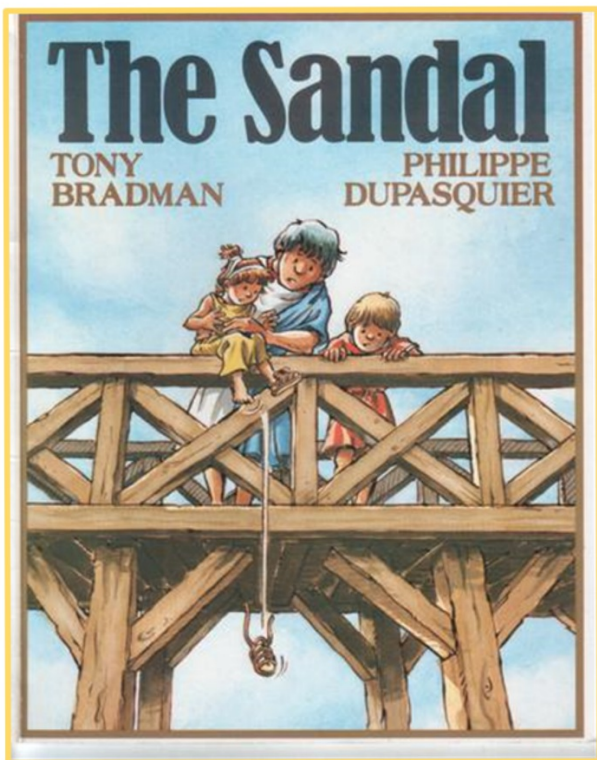


Look at the front cover of the book. We are going to look for clues to help us **predict** what will happen in the story.

What should we look at for clues?



Think about the following questions:



What do you think is the relationship between the characters on the cover?

What town/city do you think the story is set in? What clues can you see?

What's happening to the sandal? Do you think it was an accident? Why?

What do you think the characters were doing an hour before this?

How do you think the story ends?

Write some your thoughts and predictions down to send to me. I can't wait to see what you think!