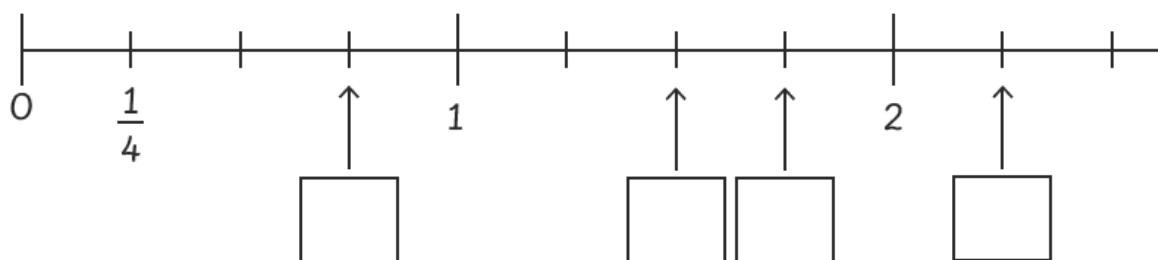
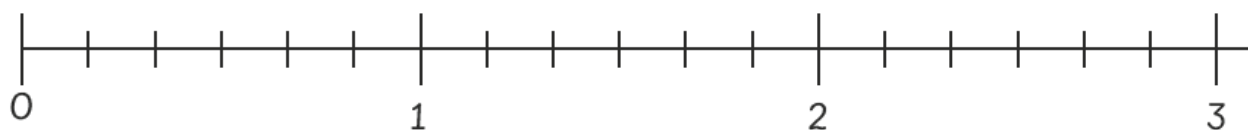


Name: _____ Class: _____ Date: _____

Review 6**1** What are the missing numbers?**2** Show the following numbers on the number line. $1\frac{1}{3}$, $2\frac{1}{6}$, $2\frac{5}{6}$ and $\frac{2}{3}$ **3** Complete the equivalent fractions.

$$\frac{1}{10} = \boxed{\frac{\quad}{20}} = \boxed{\frac{5}{\quad}} = \boxed{\frac{10}{\quad}}$$

$$\frac{6}{10} = \boxed{\frac{\quad}{20}} = \boxed{\frac{3}{\quad}} = \boxed{\frac{36}{\quad}}$$

$$\frac{9}{10} = \boxed{\frac{\quad}{40}} = \boxed{\frac{54}{\quad}} = \boxed{\frac{45}{\quad}}$$

4 Add and give each answer in its simplest form.

(a) $\frac{3}{7} + \frac{6}{7} = \boxed{} + \boxed{} = \boxed{}$

(b) $1\frac{3}{8} + \frac{7}{8} = \boxed{} + \boxed{} = \boxed{} = \boxed{}$

5 Subtract and give each answer in its simplest form.

(a) $6 - \frac{3}{5} = \boxed{} - \boxed{} = \boxed{}$

(b) $2\frac{3}{9} - \frac{8}{9} = \boxed{} - \boxed{} = \boxed{}$

6 Ruby needs 3 kg of sugar.

Sugar is sold in packets of $\frac{1}{5}$ kg each.

How many $\frac{1}{5}$ kg packets should she buy altogether?

