

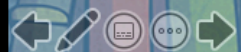
Inference and Understanding

Reading Skills



twinkl

twinkl
Quality Standard
Approved



Go Back

Activity 1

Reading a Picture

Look at this picture, then talk about these questions with a partner.



Enlarge Picture



What was the temperature like when this photograph was taken? Explain your answer.

What time of day do you think it is? How do you know?

Why could the person's drink be described as well-deserved?

What do you expect is in this person's backpack?

Example Answers

What was the temperature like when this photograph was taken?

The temperature must have been cold because the hiker has their hood up. We can see that it is not raining therefore it must be cold.

What time of day do you think it is? How do you know?

I think that it is late evening because the sun is setting on the horizon. It cannot be sunrise because the hiker wouldn't have walked up the mountain in the middle of the night.

Why could the person's drink be described as well-deserved?

The drink could be described as well-deserved because it must have taken a lot of effort to climb such a tall mountain.

What do you expect is in this person's backpack?

I expect that there will be supplies, a change of clothes, some food and some equipment in the hiker's backpack so that they are prepared for whatever happens on their hike.

Drawing Inferences

Read these sentences and draw what is being described.

Amidst the still, blue ocean stood a tiny hunk of land – an island made solely from golden sand. Atop the mound of grit stood three palm trees. The trees stood in a row, with one in the centre and one leaning out at either side towards the rippling water. At the base of the trees, some small shrubs battled for sunlight as white, foamy waves lapped the small shore. The clouds on the horizon were the only thing interrupting the endless, azure sky.



Go Back

Activity 2

Drawing Inferences

Did you draw something like this?



Go Back

Activity 3

Reading a Picture

Look at this picture, then talk about these questions with a partner.



Enlarge Picture



In which country do you think this photograph was taken?

What can you tell about the climate in this place?

What sort of building can be found on the far right of the street?

List two things you may expect to hear when walking down this street.

Example Answers

In which country do you think this photograph was taken?

I think that this photograph was taken in China because the signs and lanterns are covered in Chinese writing, which is unusual in the UK.

What can you tell about the climate in this place?

I can tell that the climate is warm because many of the people in the photograph are wearing short-sleeved shirts, despite the fact that it is the evening.

What sort of building can be found on the far right of the street?

A pharmacy, doctors or hospital can be found at the far right of the street. I know this because the plus sign is used to show places for medical care.

List two things you may expect to hear when walking down this street.

I would expect to hear lots of conversations in a range of languages. I would also expect to hear sounds of cooking coming from the food stands at each side of the street.

Drawing Inferences

Read these sentences and draw what is being described.

The tall, slim model strutted down the catwalk with her hands on her hips, wearing a stern look of determination on her face. She modelled the latest designer gown: two thin shoulder straps; a triangular design; and a long, flowing sheer train. The lights from overhead created a spotted pattern on the catwalk and the audience – darkened by the shadows – sat in rows at either side to gaze at the latest trends.

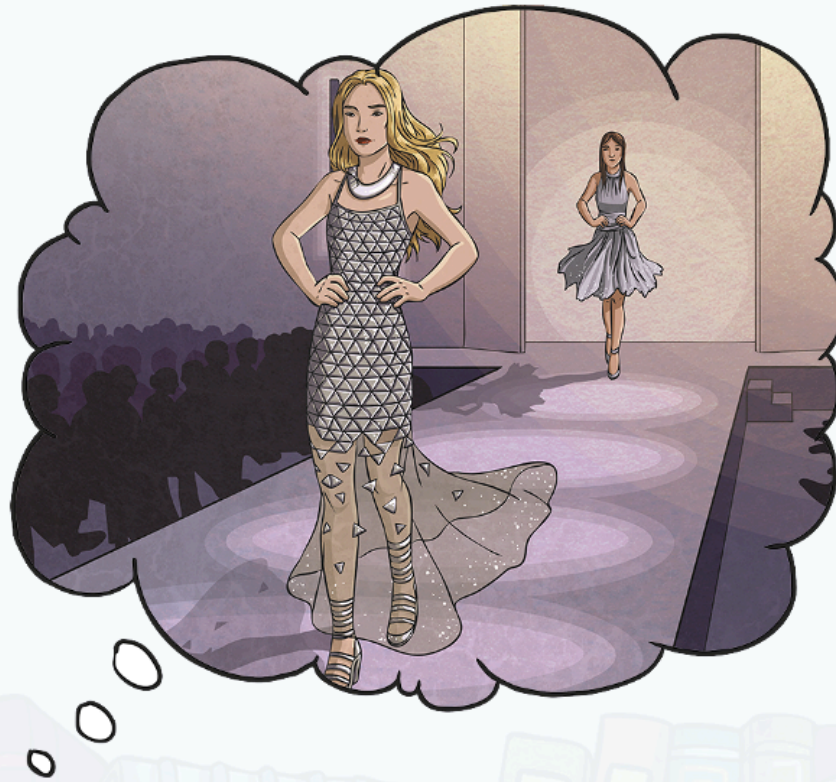


Go Back

Activity 4

Drawing Inferences

Did you draw something like this?



Go Back

Activity 5

Reading a Picture

Look at this picture, then talk about these questions with a partner.



Enlarge Picture



What can you tell about the temperature of the water?

Is this girl a confident swimmer?
Explain your answer.

How do you know that the water is shallow?

How do you know that the sun is shining?

Example Answers

What can you tell about the temperature of the water?

I can tell that the water is cold because the girl looks shocked when she is splashed by it. She has made her body stiff as the water must be chilly.

Is this girl a confident swimmer? Explain your answer.

The girl is not a confident swimmer. I know this because she is still wearing armbands.

How do you know that the water is shallow?

I can tell that the water is shallow because, despite only being young (and quite small), the girl is still able to stand up in the water.

How do you know that the sun is shining?

I know that the sun is shining because I can see the sunlight reflecting off the water splashes. Also, the sun must be shining for the girl to be wearing sunglasses.