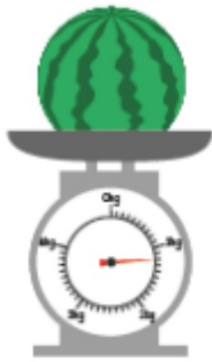


Wednesday

In Focus



Who is correct?

The mass of  is about 1 kg 200 g.



weighs about 1 kg 20 g.

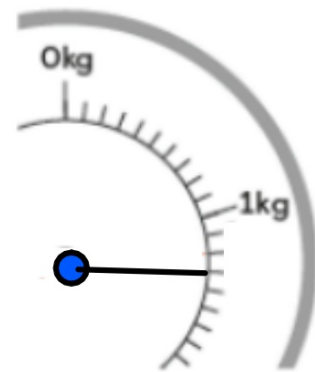
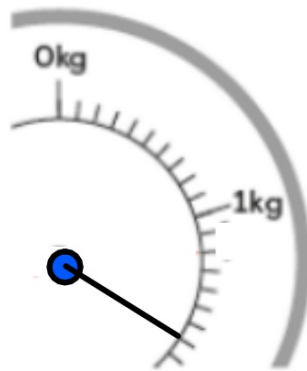
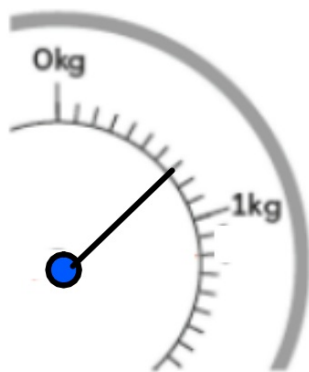
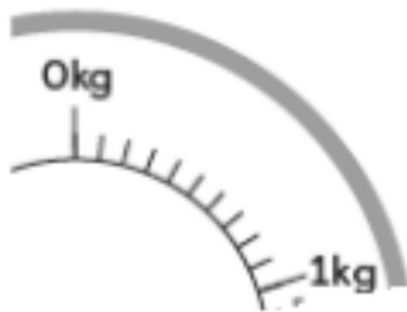


What do the lines stand for? How could I work it out?

What could we count in?

Think how many grams in a Kg.

Watch "Video 1"



Watch "Video 2"

Let's Learn

Each small marking stands for 100 g.



1 kg = 1000 g



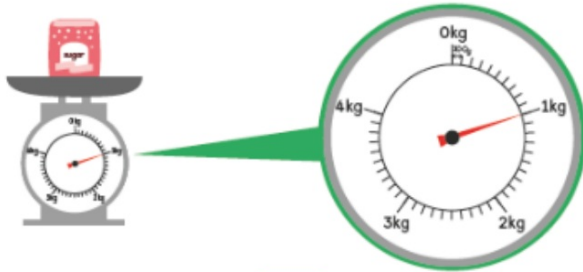
The watermelon weighs about 1 kg 200 g.
The mass of the watermelon is about 1 kg 200 g.

Guided Practice

Watch "Video 3"

What is the mass of each thing?

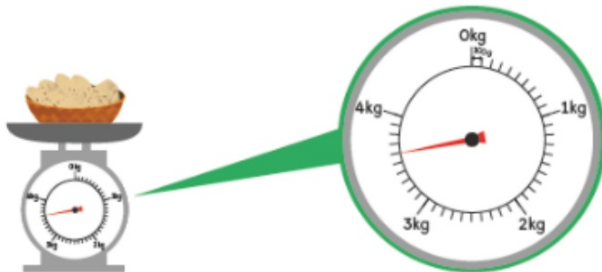
(a)



The bag of sugar weighs about kg.

The mass of the bag of sugar is about kg.

(b)



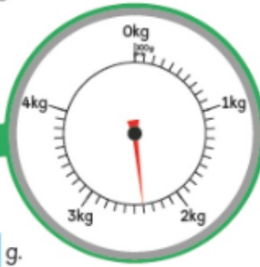
The basket of potatoes weighs about 3 kg g.

The mass of the basket of potatoes is about 3 kg g.



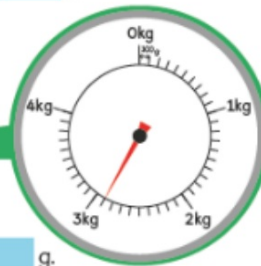
The chicken weighs about 2 kg g.

The mass of the chicken is about 2 kg g.



The cabbages weigh about kg g.

The mass of the cabbages is about kg g.



The 3 bags of flour weigh about kg g.

The mass of the 3 bags of flour is about kg g.

Complete the worksheet.
You can download these off the Virtual School!

Challenge yourself:

How could we write the mass for each object in just grams?

