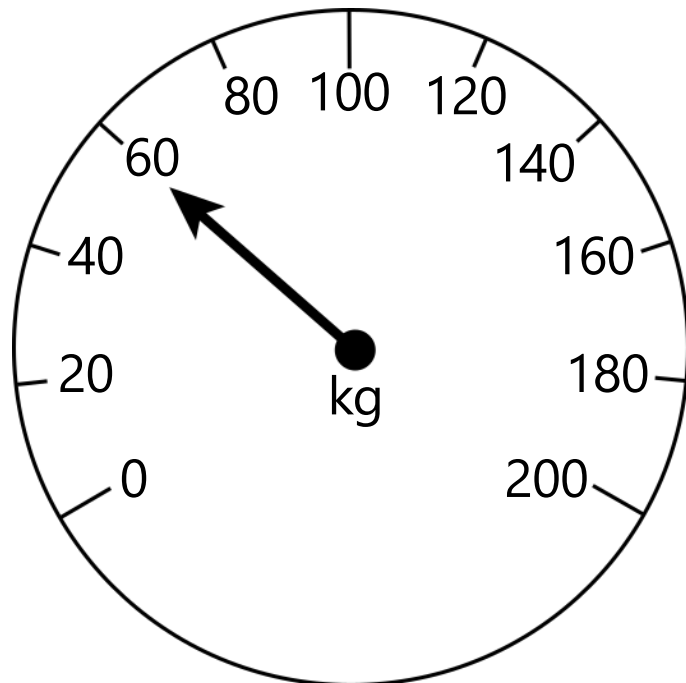


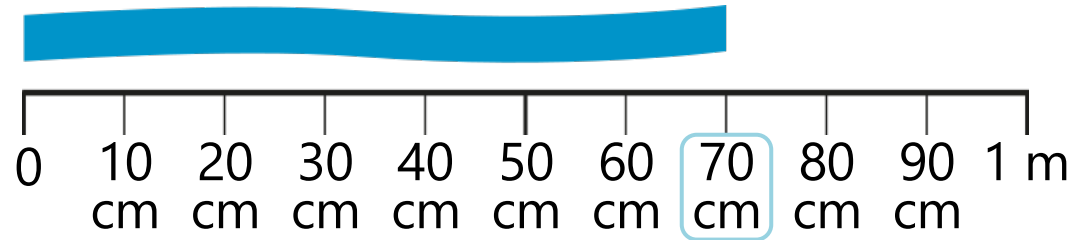
3NPV-4 Reading scales with 2, 4, 5 or 10 intervals



- What is different about this representation? Where might you see this?
- Has the arrow stopped before or after 100? How do you know?
- How many intervals are there between zero and 100? So, what interval do we need to count up in?
- What value is the arrow pointing to?
- Did you get 60kg? Count in steps of 20 from zero to check if you are correct?
- Can you point to where 180kg is on this measuring scale? What about 190kg?



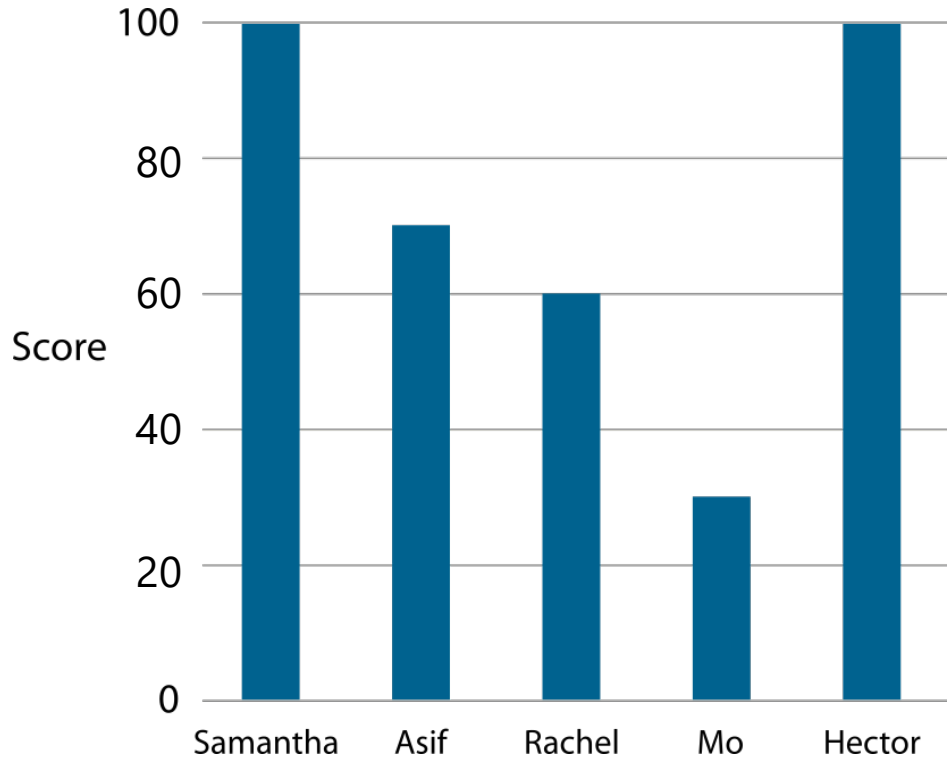
3NPV-4 Reading scales with 2, 4, 5 or 10 intervals



- Do you think this ribbon is longer or shorter than 100cm? How do you know?
- Could it be 40cm long? Why not?
- How many intervals are there between zero and 100cm? So, what interval do we need to count up in?
- How long is the ribbon?
- Did you get 70cm? Count in steps of 10 to check if you are correct.
- How long would the ribbon be if we cut off 20cm?



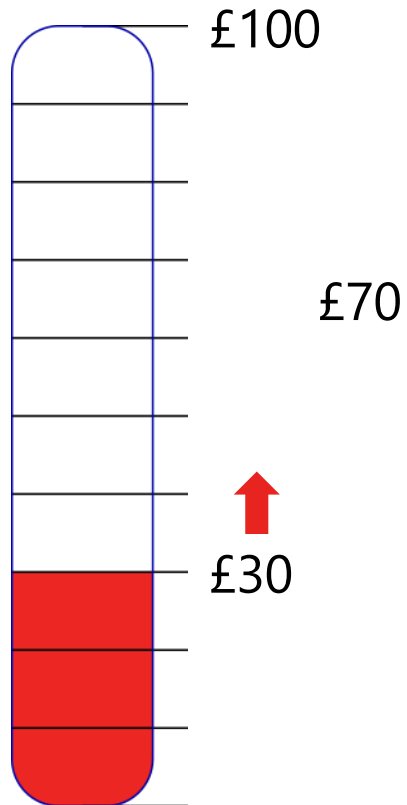
3NPV-4 Reading scales with 2, 4, 5 or 10 intervals



- What do you notice about this bar chart?
- What interval does the score go up in?
- Did any children score the same number of points? How do you know?
- Can Asif have scored 80 points? Why not? How many points did Asif score?
- How much more did Samantha score than Asif?
- How much less did Rachel score than Hector?
- Can you make up a question to ask about the bar chart?



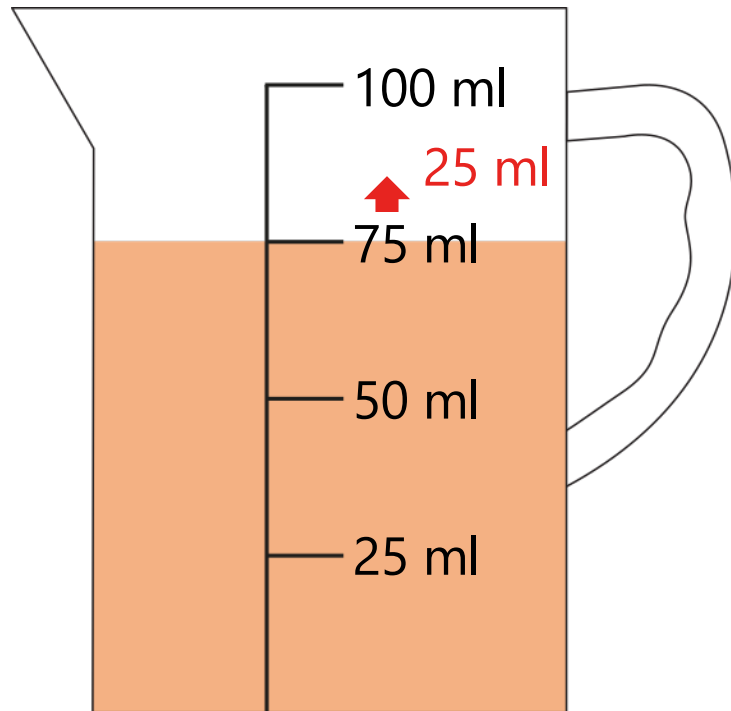
3NPV-4 Reading scales with 2, 4, 5 or 10 intervals



- What do you notice about this numberline?
- How many intervals are there between zero and £100? So, what interval do we need to count up in?
- How much money has been raised so far?
- How much more money needs to be raised to reach £100? How do you know?



3NPV-4 Reading scales with 2, 4, 5 or 10 intervals



- How many intervals are there between zero and 100ml on this measuring jug? So, what interval do we need to count up in?
- How much liquid do you think is in the jug?
- Did you get 75ml? Count in steps of 25 from zero to check if you are correct.
- How much more liquid needs to be poured in to reach 100ml? How do you know?

