

This term we are starting a topic that will help you discover the world around you

Any guesses what our topic



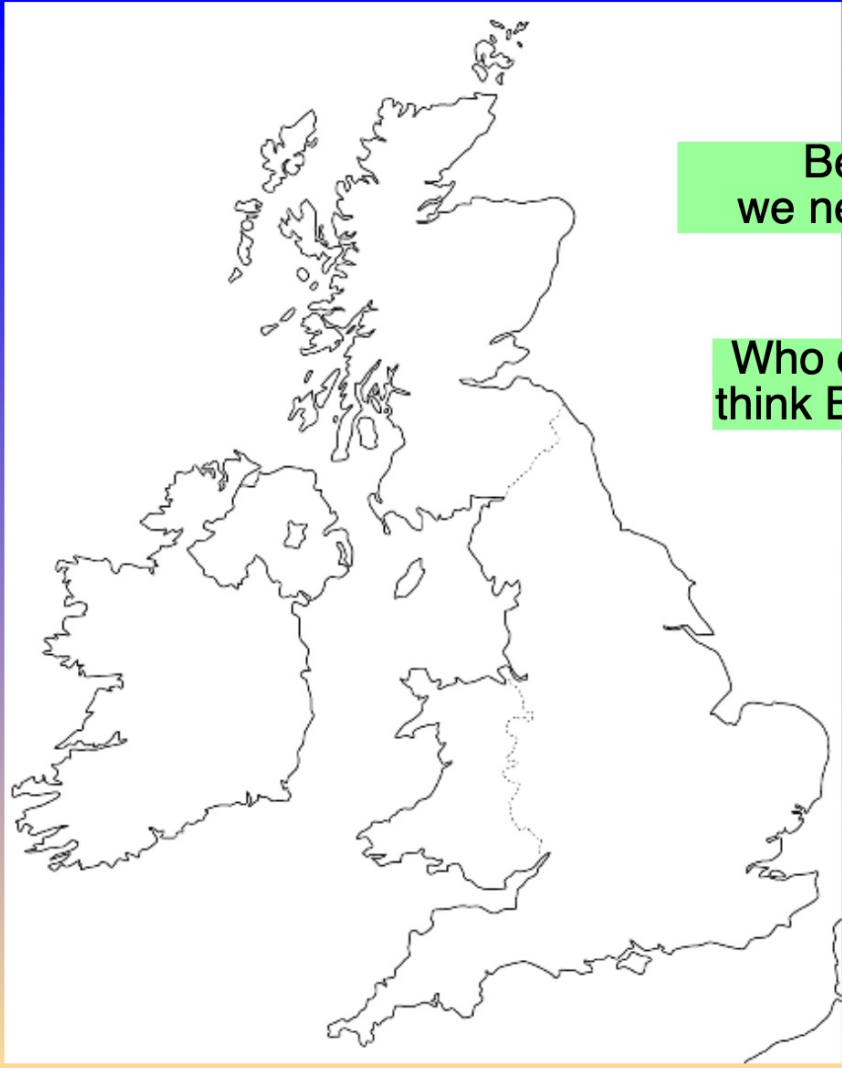


What does being a 'brummie' mean to you?

Is a Brummie a certain type of person?

What is a Brummie

Would you refer to yourself as a Brummie?

An outline map of the United Kingdom and Ireland, showing the coastlines and major islands. The map is positioned on the left side of the slide, within a white rectangular area. The background of the slide is a blue-to-purple gradient.

Before we learn anything,
we need to know **where** we are!

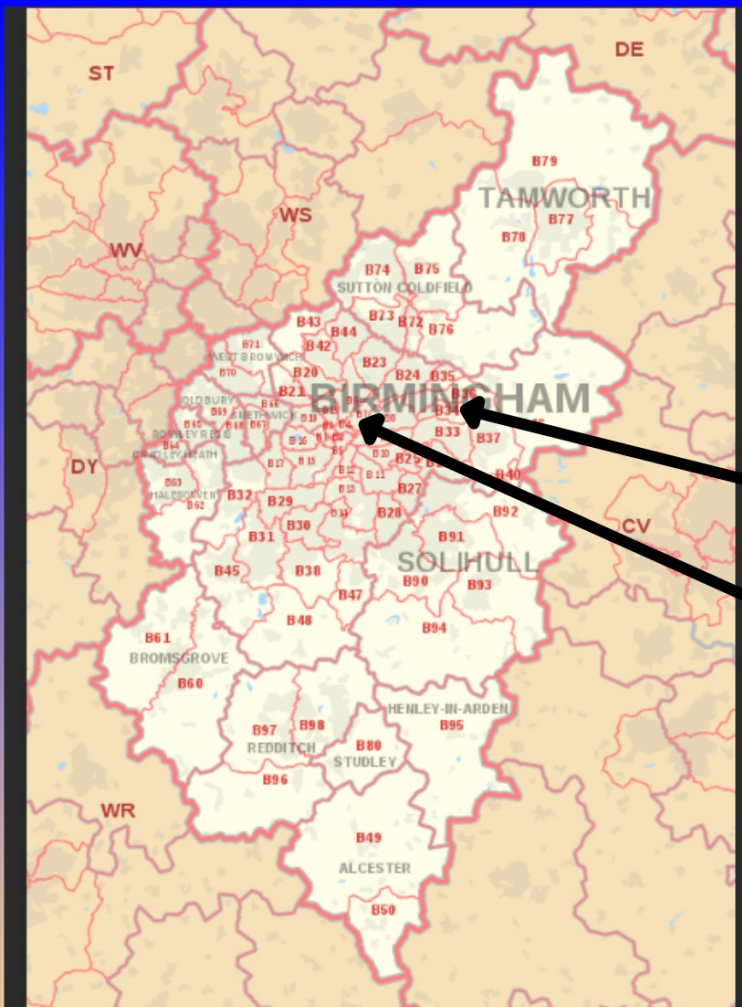
Who can draw a dot where they
think Birmingham is on this map?

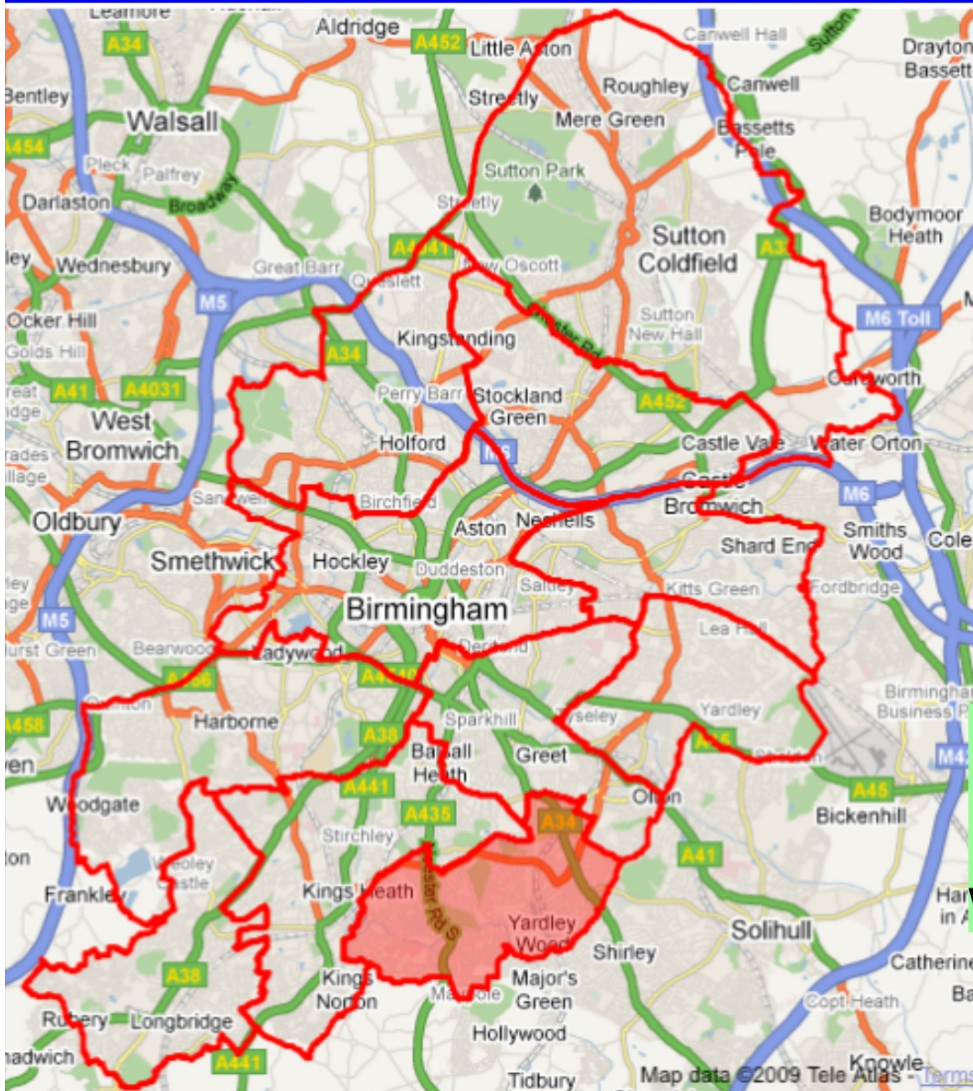
Everyone with a property all over the world has a postcode.

This tells us which part of the country you live in. Areas of Birmingham start with a B. The number after it, is the area.

Hillstone Primary School is B34

B1 is the postcode for the City Centre





The red line shows all of Birmingham.

Is this bigger than you thought?
Or smaller?

Can you see Shard End?

What do you notice about how close we are to the red line?

Would you call the city centre 'town'?

Or somewhere else?

Why do you think this is?

What do you notice about the **landscape**?



What do you notice about the different types of buildings in this picture?



1.



2.



3.



4.

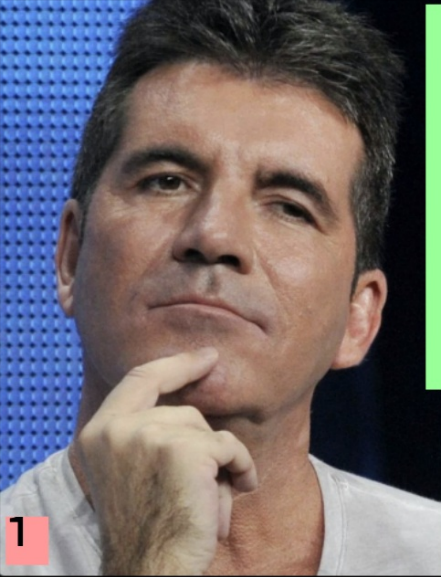


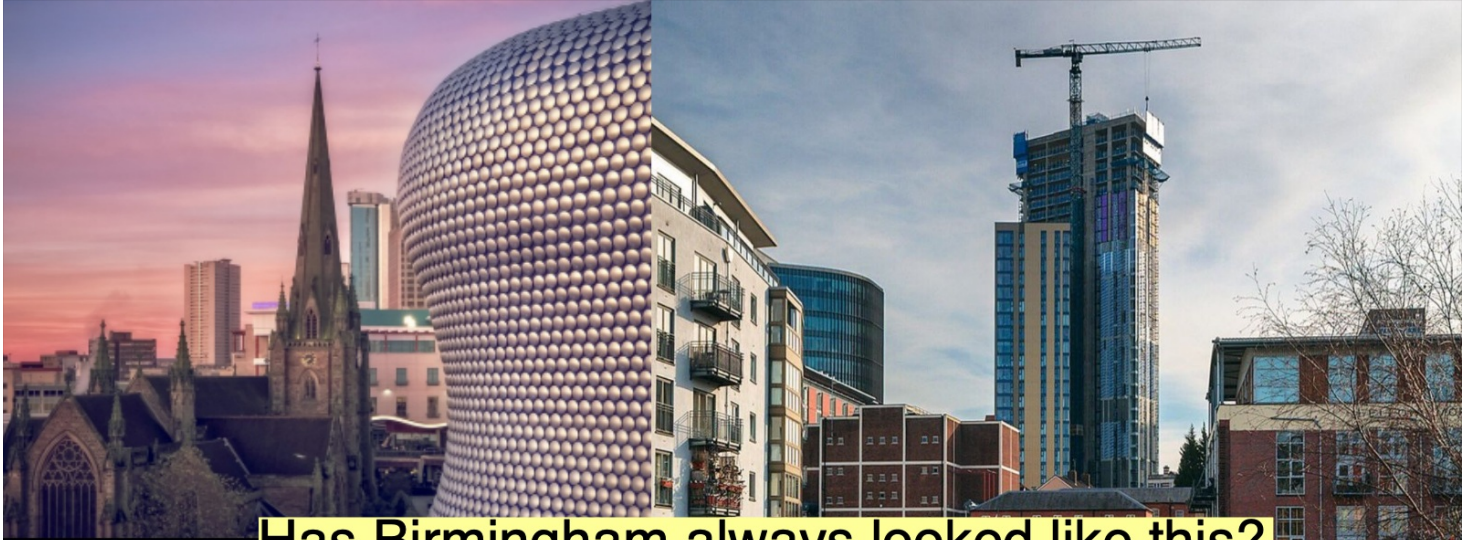
5.



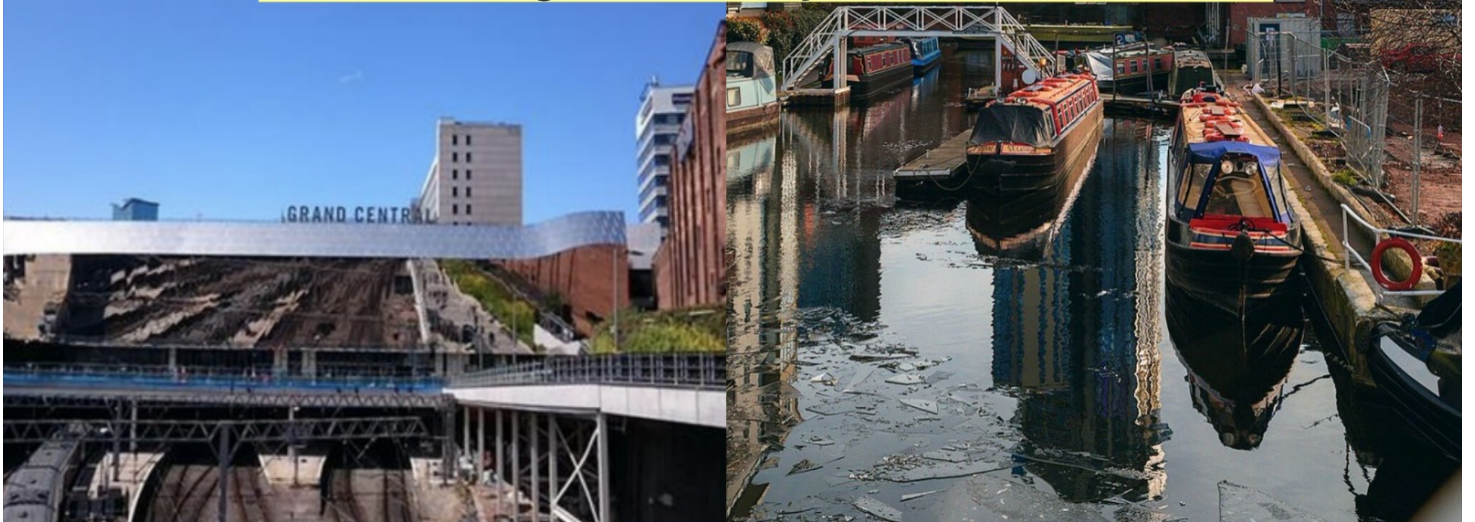
Turning your sheet over
how many famous Brummie
can you name?
Why are they famous?

Discuss with your partner





Has Birmingham always looked like this?





What do you notice in these photos?

