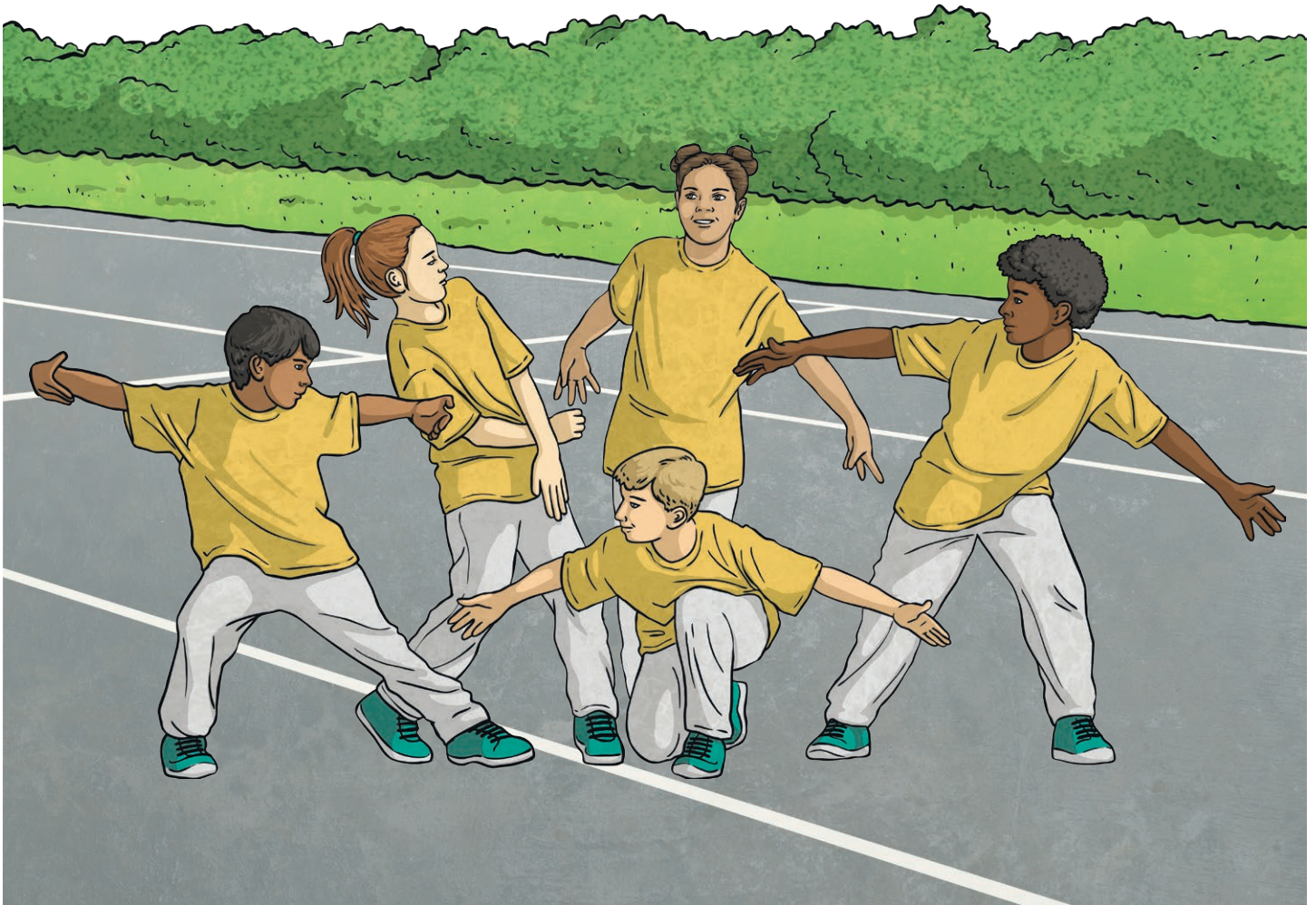


Friendship Problem Scenario

Please read the following scenario and then discuss and answer the questions in the cards.



A group of friends are in the playground, practising a dance routine they have learnt. The six children are all from the same class.

Emily has just finished her lunch and comes over to join in. Ava turns to Emily and says, "You're too late! You aren't allowed to join in - go away!"

Emily is really upset and runs away; she sits on a bench on her own and starts to cry. The children carry on practising and ignore Emily.

The bell rings for the end of lunchtime and Emily goes back into class, still feeling upset. Ava is laughing and says that she can't be in the show anymore.

