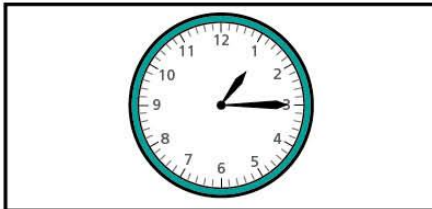
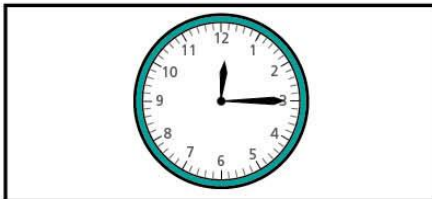
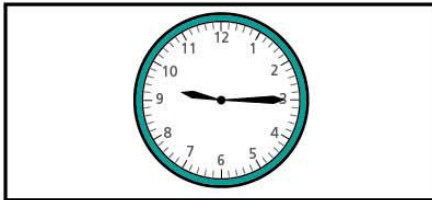
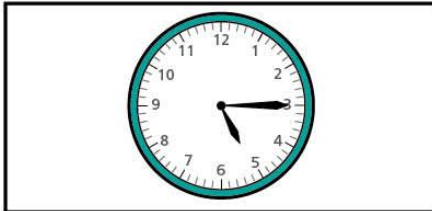


Quarter past and quarter to

1 Match the clocks to the times.



quarter
past 1

quarter
past 12

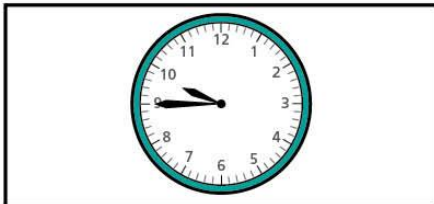
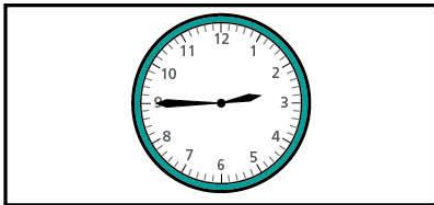
quarter
past 9

quarter
past 5

1 Complete the sentence.

At quarter past, the minute hand points to

2 Match the clocks to the times.



quarter to 10

quarter to 1

quarter to 7

quarter to 3

2 Complete the sentence.

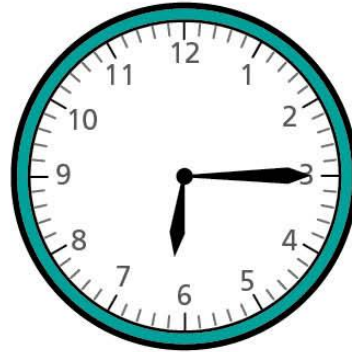
At quarter to, the minute hand points to

- 3 Write the time shown on each clock.
Use the word bank to help you.

quarter to

quarter past

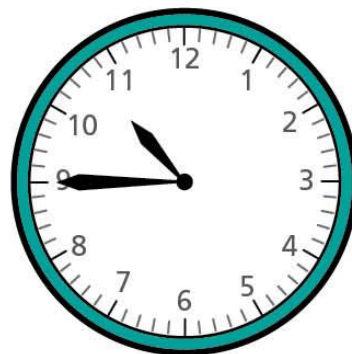
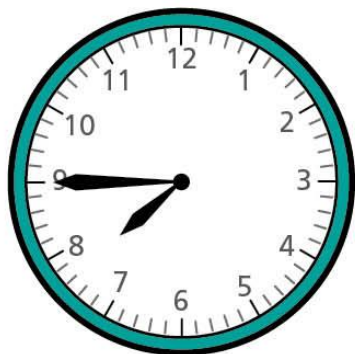




3

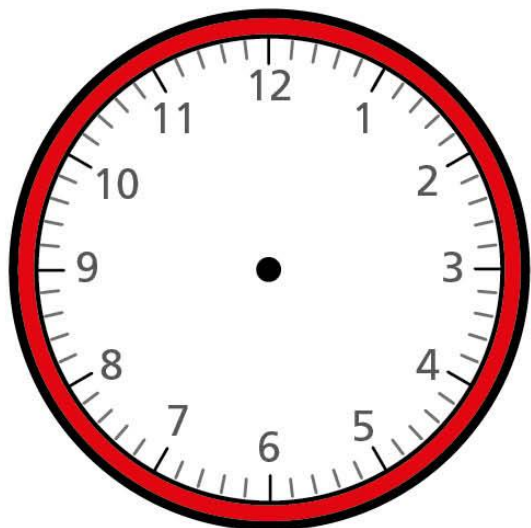
quarter to

quarter past

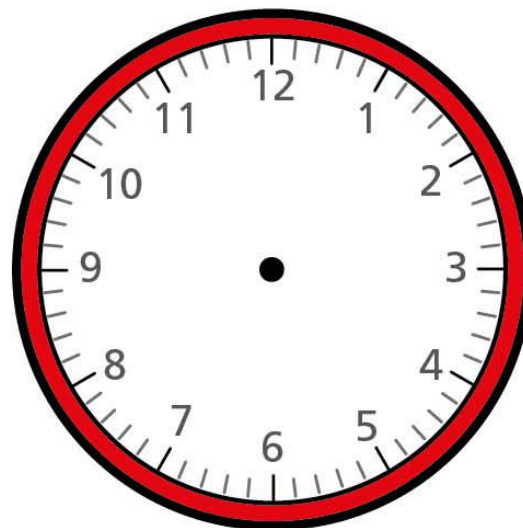




- 4 Draw hands to show the time on each clock.

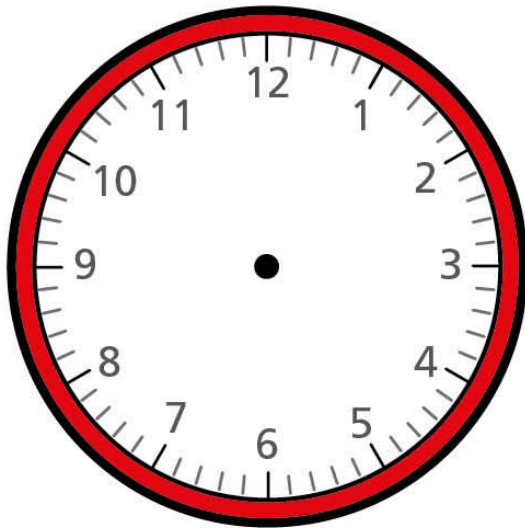


quarter past 11

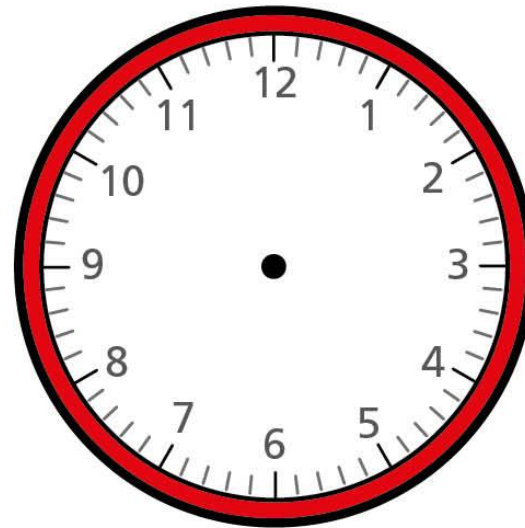


quarter past 3

4



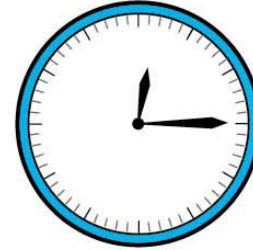
quarter to 4



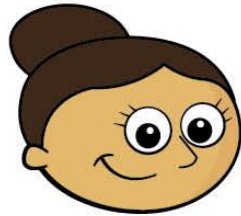
quarter to 1



5 The clocks have no numerals.



a)



You can still
work out what time
they show.

Why does Dora think this?

b) Write what time each clock shows.

