

MONTHS AND YEARS



GET READY



- 1) How many days are there in one week?

- 2) How many months are there in one year?

- 3) How many days are there
 - a) in an ordinary year?
 - b) in a leap year?

- 4) What month comes before January?

- 1) How many days are there in one week? 7

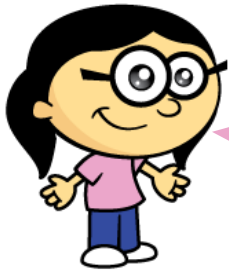
- 2) How many months are there in one year? 12

- 3) How many days are there
 - a) in an ordinary year? 365
 - b) in a leap year? 366

- 4) What month comes before January? December

LET'S LEARN





Don't worry Tiny. I know a rhyme you can use.

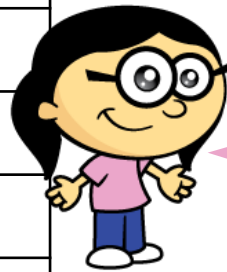
30 days has September,
April, June and November,
All the rest have 31
Except February, 28 days here
Or 29 in each leap year.

I can't remember how many days there are in each month.



Month	Number of days
January	31
February	28 or 29
March	31
April	30
May	31
June	30
July	31
August	31
September	30
October	31
November	30
December	31

30 days has September,
April, June and November,
All the rest have 31
Except February, 28 days here
Or 29 in each leap year.

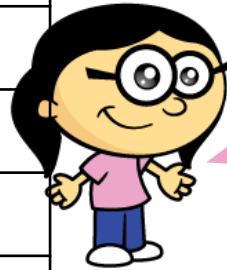


We can use the rhyme
to help us complete
the table.



Month	Number of days
January	31
February	28 or 29
March	31
April	30
May	31
June	30
July	31
August	31
September	30
October	31
November	30
December	31

30 days has September,
April, June and November,
All the rest have 31
Except February, 28 days here
Or 29 in each leap year.



Leap years come every
4 years. 2020 was a
leap year

So 2024 will be a
leap year too?
How do we know if
it's a leap year?



YOUR TURN

Have a go at questions 1
and 2 on the worksheet





Have a think



One month is the same as 4 weeks.

Is Ron correct?

February has 28 days.



$$1 \text{ week} = 7 \text{ days}$$

$$4 \text{ weeks} = 4 \times 7 \text{ days} = 28 \text{ days}$$

One month is usually 4 weeks and 2-3 days

Here is a calendar to show December 2021

Mon	Tue	Wed	Thu	Fri	Sat	Sun
		1	2	3	4	5
6	7	8	9	10	11	12
13	14	15	16	17	18	19
20	21	22	23	24	25	26
27	28	29	30	31		

What do you know? What can you find out?

Have a think





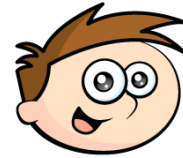
December starts on a Wednesday.

Mon	Tue	Wed	Thu	Fri	Sat	Sun
		1	2	3	4	5
6	7	8	9	10	11	12
13	14	15	16	17	18	19
20	21	22	23	24	25	26
27	28	29	30	31		



Christmas day is on a Saturday.

So the 30th November must be a Tuesday.



There are 5 Fridays in December.

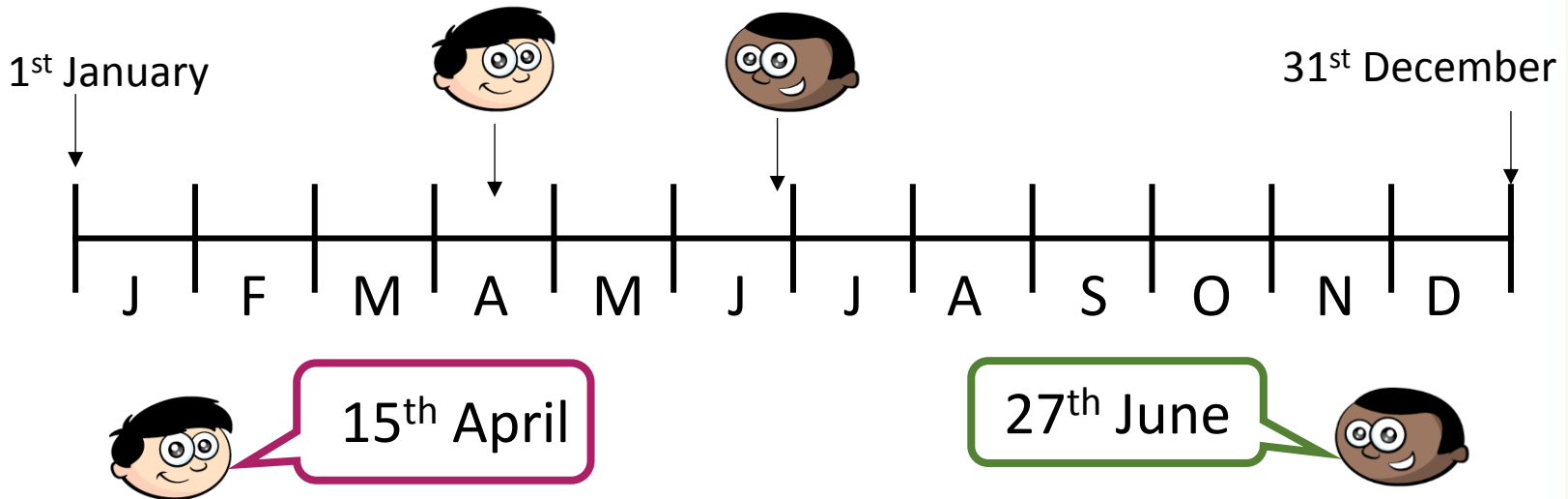


But only 4 Saturdays.

December has 31 days! I know that from the rhyme!



This number line represents one year.



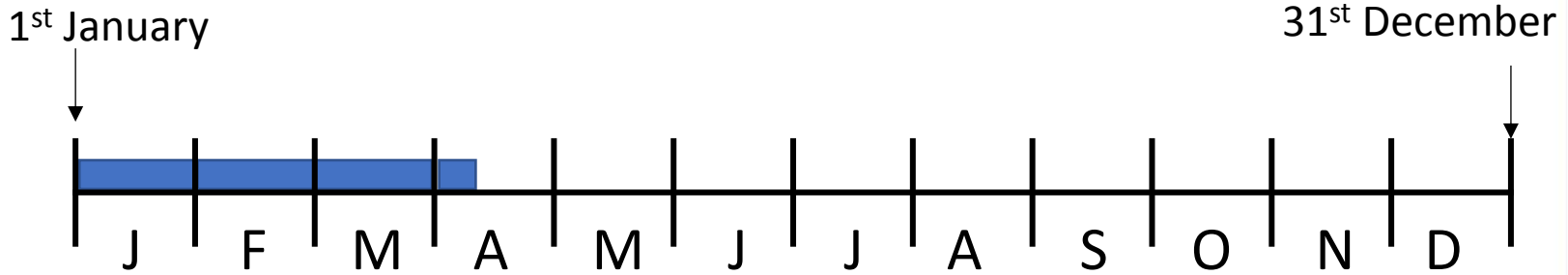
Dexter and Mo draw arrows to mark their birthdays

Estimate the date of their birthdays.

Have a think



This number line represents one year.



$$31 \quad 28 \quad 31 \quad 10$$

$$31 + 28 + 31 = 90 \text{ days}$$

$$30 + 20 + 30 = 80$$

$$8 + 1 + 1 = 10$$

What date will the hundredth day of the year be if this is not a leap year?

The hundredth day would be on the 10th April.

Have a think:



YOUR TURN

Have a go at the rest of
the questions on the
worksheet

