

HOURS IN A DAY



GET READY



Here are some of the numbers we use to measure time.

12

7

365

24

366

60

Can you explain what each number represents?

Here are some of the numbers we use to measure time.

12

hours on a clock
months in a year

7

days in a week

365

days in a year

366

days in a leap year

24

hours in a day

60

seconds in a minute
minutes in an hour

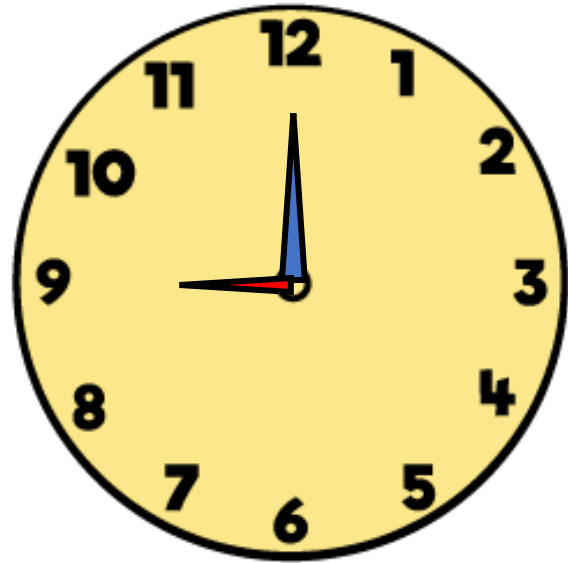
Can you explain what each number represents?

LET'S LEARN



It's nine o'clock.

Who is correct?



Have a think



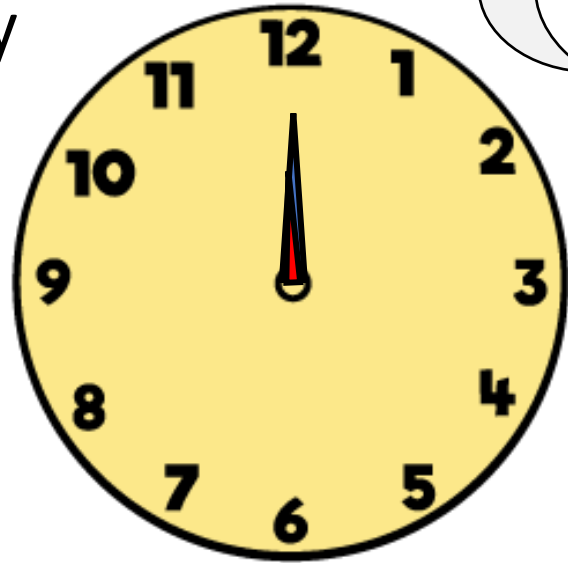
It's time for school



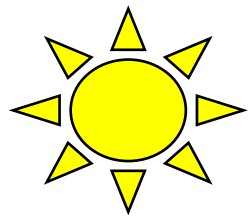
It's time for bed

12 o'clock
midday

12 o'clock
midnight

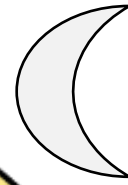


Time for
school

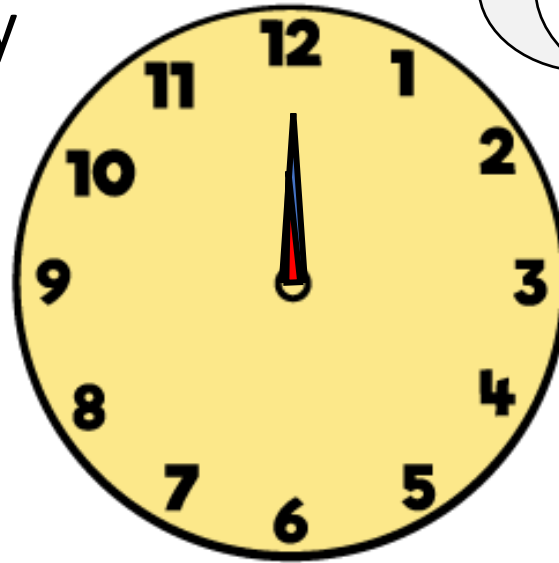


morning

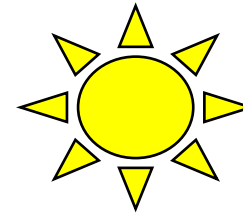
12 o'clock
midday



12 o'clock
midnight

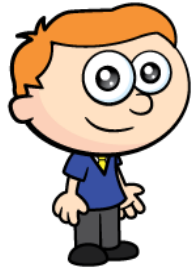


afternoon



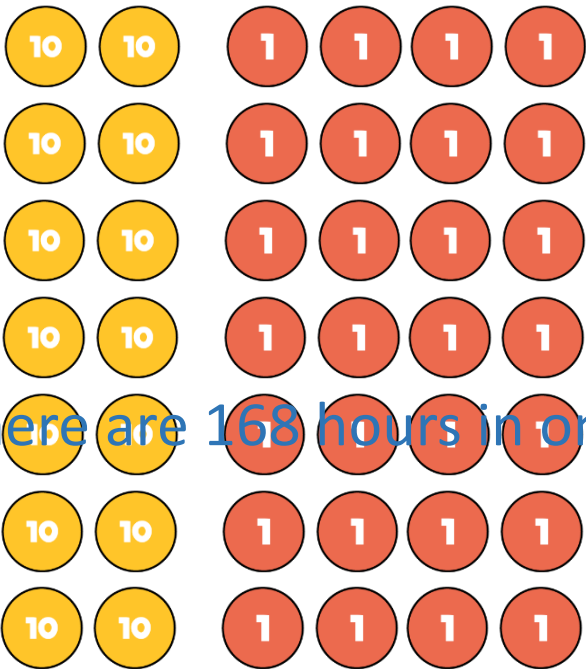
evening

There are 24 hours in one day.



If there are 24 hours in one day. I wonder how many hours there are in one week.

Let's find out!



There are 168 hours in one week.



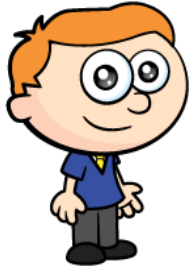
	H	T	O	
		2	4	
	×		7	
	<hr/>			
	1	6	8	
	<hr/>			
	Have	a	think	



YOUR TURN

Have a go at questions
1 - 4 on the worksheet





There's 8 weeks to go until the next school holiday!

How many school days is that?



There are 5 school days in each week.

$$8 \times 5 = 40$$

There are 40 school days in 8 weeks.

Have a think



YOUR TURN

Have a go at the rest of
the questions on the
worksheet

