

Day 4

Solve problems involving measures



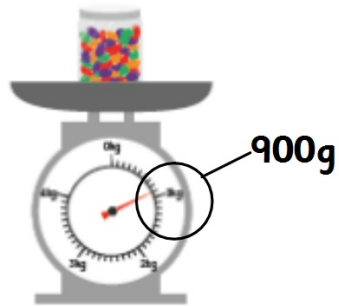
Quick recap from the previous lesson.



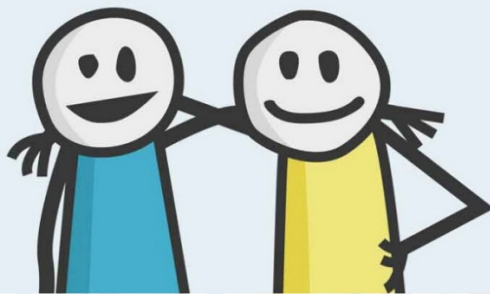
20/1/22

Day 4

In Focus

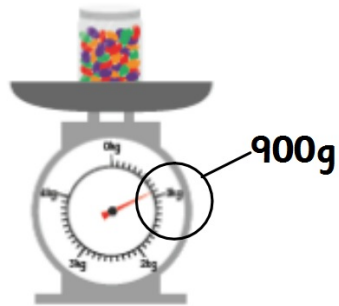


The mass of the empty jar is about 475 g.
What is the mass of the jelly beans?



What method
could I use to
work this out?

In Focus



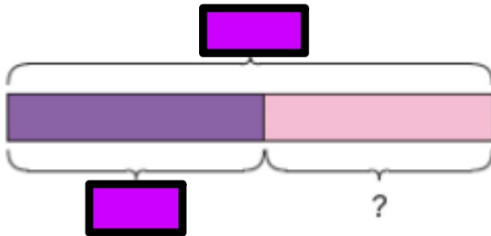
The mass of the empty jar is about 475 g.
What is the mass of the jelly beans?

What is the whole?



Let's Learn

The mass of the jar of jelly beans is about 900 g.



The mass of the jelly beans is about 425 g.

What kind of calculation would I need to do?

Practical



Make and draw the calculation you would use to solve the problem.



The mass of the empty jar is about 475 g.
What is the mass of the jelly beans?

3



Find the total mass.

Use the bar model and column method to show your working out.

3



Find the total mass.

	2	kg	2	7	5	g
+	1	kg	3	9	0	g
<hr/>						
<hr/>						

Guided Practice

- 1 Emma bought 985 g of art paper.
She used 795 g of the art paper.
Find the mass of the remaining art paper.

- 2 A piece of luggage with clothes weighs 12 kg.
The empty luggage weighs 5 kg.
Find the mass of the clothes.

Use the bar model and column method to show your working out.

Guided Practice

1 Emma bought 985 g of art paper.
She used 795 g of the art paper.
Find the mass of the remaining art paper.

2 A piece of luggage with clothes weighs 12 kg.
The empty luggage weighs 5 kg.
Find the mass of the clothes.

Let's check your methods of working out.

- 1 Emma bought 985 g of art paper.
She used 795 g of the art paper.
Find the mass of the remaining art paper.

$$\begin{array}{r} 985 \text{ g} \\ - 795 \text{ g} \\ \hline \end{array}$$

2

A piece of luggage with clothes weighs 12 kg.
The empty luggage weighs 5 kg.
Find the mass of the clothes.

$$12 \text{ kg} - 5 \text{ kg} =$$

Name: _____ Class: _____ Date: 20/1/22

Worksheet 5

Solving Word Problems

Solve.

- 1 The mass of a dictionary is 1 kg 250 g.
The mass of a box of paper is 2 kg 375 g.
Find the total mass of the two items.



- 2 The mass of a box of chocolates is 948 g.
The mass of the empty box is 159 g.
Find the mass of the chocolates.



- 3 A baker has 20 kg of flour.
He uses some of it to bake a huge cake and has 3 kg of flour left.
Find the mass of flour used by the baker to bake the huge cake.



Most
Pg 173

Draw the bar models and column methods to go with these.

Name: _____ Class: _____ Date: 20/1/22

Worksheet 5

Solving Word Problems

Solve.

- 1 The mass of a dictionary is 25 g.
The mass of a box of paper is 34 g.
Find the total mass of the two items.



- 2 The mass of a box of chocolates is 61 g.
The mass of the empty box is 16 g.
Find the mass of the chocolates.



- 3 A baker has 20 kg of flour.
He uses some of it to bake a huge cake and has 3 kg of flour left.
Find the mass of flour used by the baker to bake the huge cake.



Some
Pg 173

Draw the bar models and column methods to go with these.

Going Deeper

380g

230g

Using the measurements above, write your own word problem. It can be addition or subtraction.

Solve it using the bar and column method.