

Day 3

Can measure accurately in kg/g

Can convert between kg/g

Can compare measures using the appropriate scale.



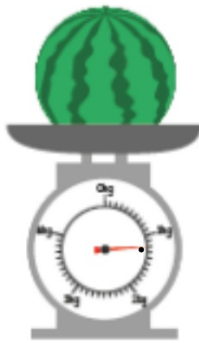
Quick recap from the previous lesson.



19/1/22

Day 3

In Focus

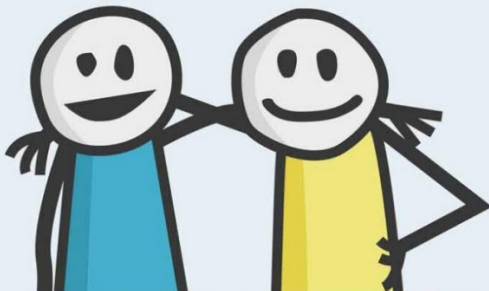


Who is correct?

The mass of  is about 1 kg 200 g.



weighs about
1 kg 20 g.

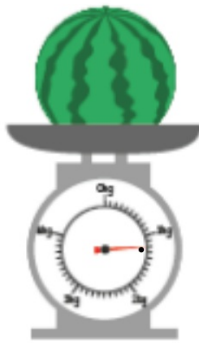


It is important to
look at the small
line between the
numbers.

19/1/22

Day 3

In Focus



Who is correct?

The mass of  is about 1 kg 200 g.

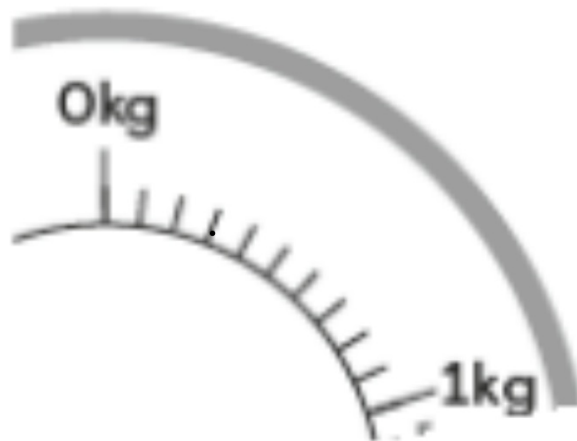


weighs about
1 kg 20 g.



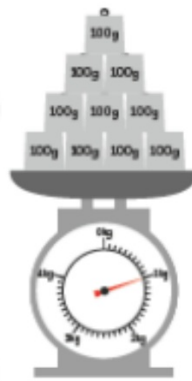
What do the lines stand for? How could I work it out?

What could we count in?



Let's Learn

Each small marking stands for 100 g.



1 kg = 1000 g

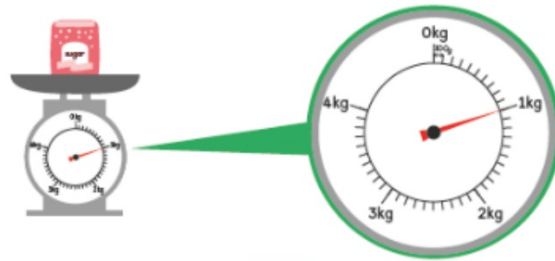


The watermelon weighs about 1 kg 200 g.
The mass of the watermelon is about 1 kg 200 g.

Guided Practice

What is the mass of each thing?

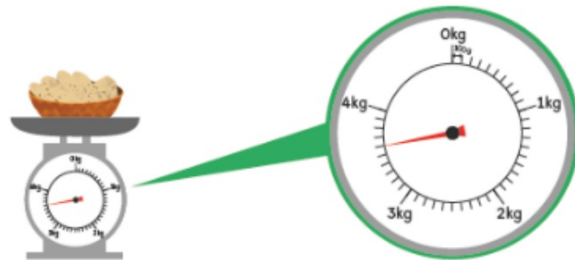
(a)



The bag of sugar weighs about kg.

The mass of the bag of sugar is about kg.

(b)

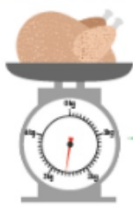


The basket of potatoes weighs about 3 kg g.

The mass of the basket of potatoes is about 3 kg g.

How could we write this mass in just grams?

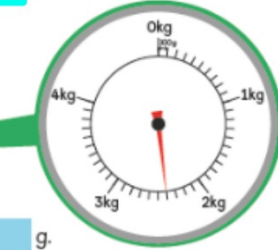
(c)



The chicken weighs about 2 kg g.

The mass of the chicken is about g.

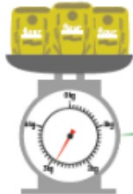
(d)



The cabbages weigh about kg g.

The mass of the cabbages is about g.

(e)



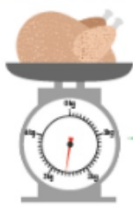
The 3 bags of flour weigh about kg g.

The mass of the 3 bags of flour is about g.

How could we write this mass in just grams?

Th H T O

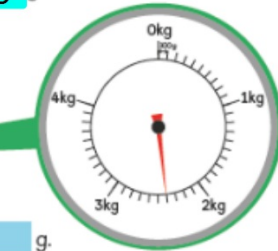
(c)



The chicken weighs about 2 kg 600g.

The mass of the chicken is about 2600 g.

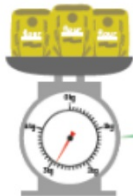
(d)



The cabbages weigh about kg g.

The mass of the cabbages is about g.

(e)



The 3 bags of flour weigh about kg g.

The mass of the 3 bags of flour is about g.

How could we write this mass in just grams?

Th H T O

2 6 0 0

Name: _____ Class: _____ Date: **19/1/22**

Worksheet 3

Reading Weighing Scales

1 Find the mass of each item below.



(a) The cake weighs about
 kg g.

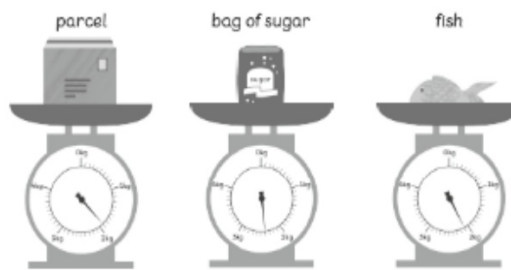
(b) The mass of 1 bag of sugar is about

kg g.



(c) The mass of a fish and a chicken
is about kg g.

2 Fill in the blanks.



(a) The is the lightest.

(b) The is the heaviest.

(c) The mass of the fish is about kg g, while the mass
of the parcel is about kg g.

(d) The bag of sugar is about g
(heavier/lighter) than the fish.

(e) Arrange the items from the heaviest to the lightest.

, ,

Going Deeper

1kg 900g 2400g 2kg 100g 1800g

Convert and arrange the mass in order from lightest to heaviest.

Convert to either just grams OR kilograms and grams.

Explain how you did it.